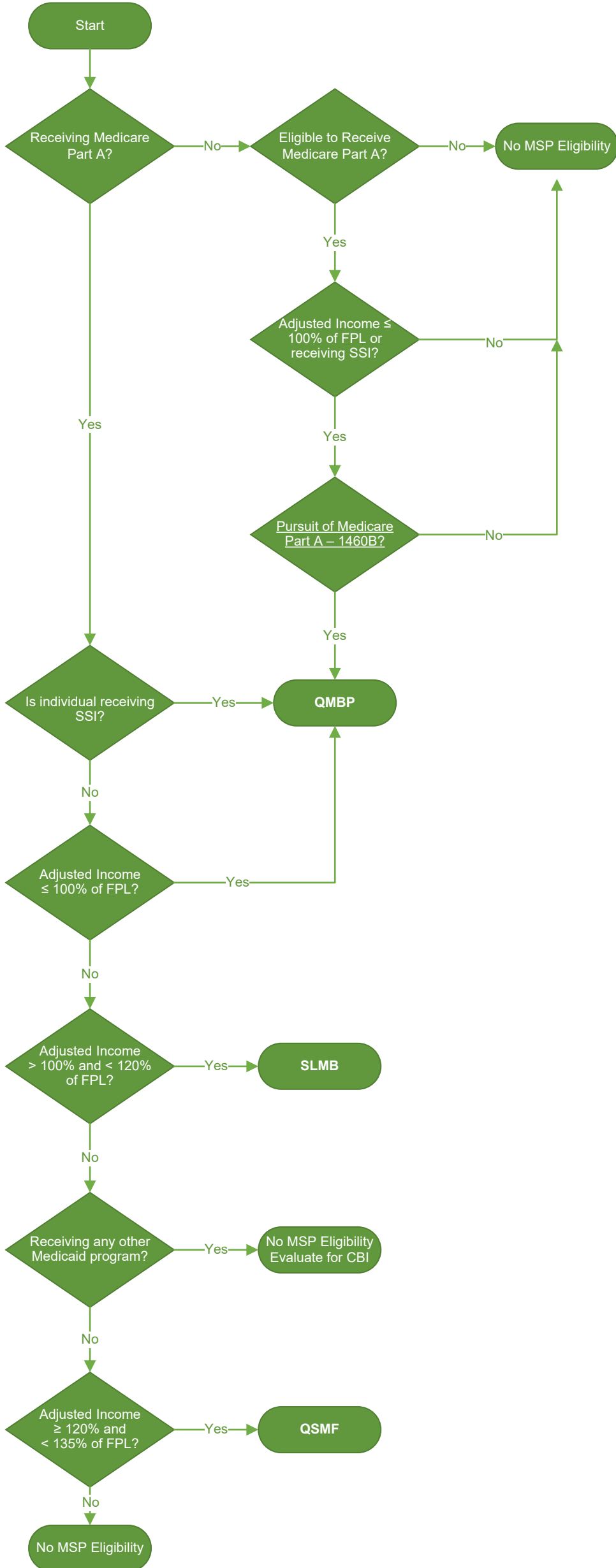


Medicare Savings Programs

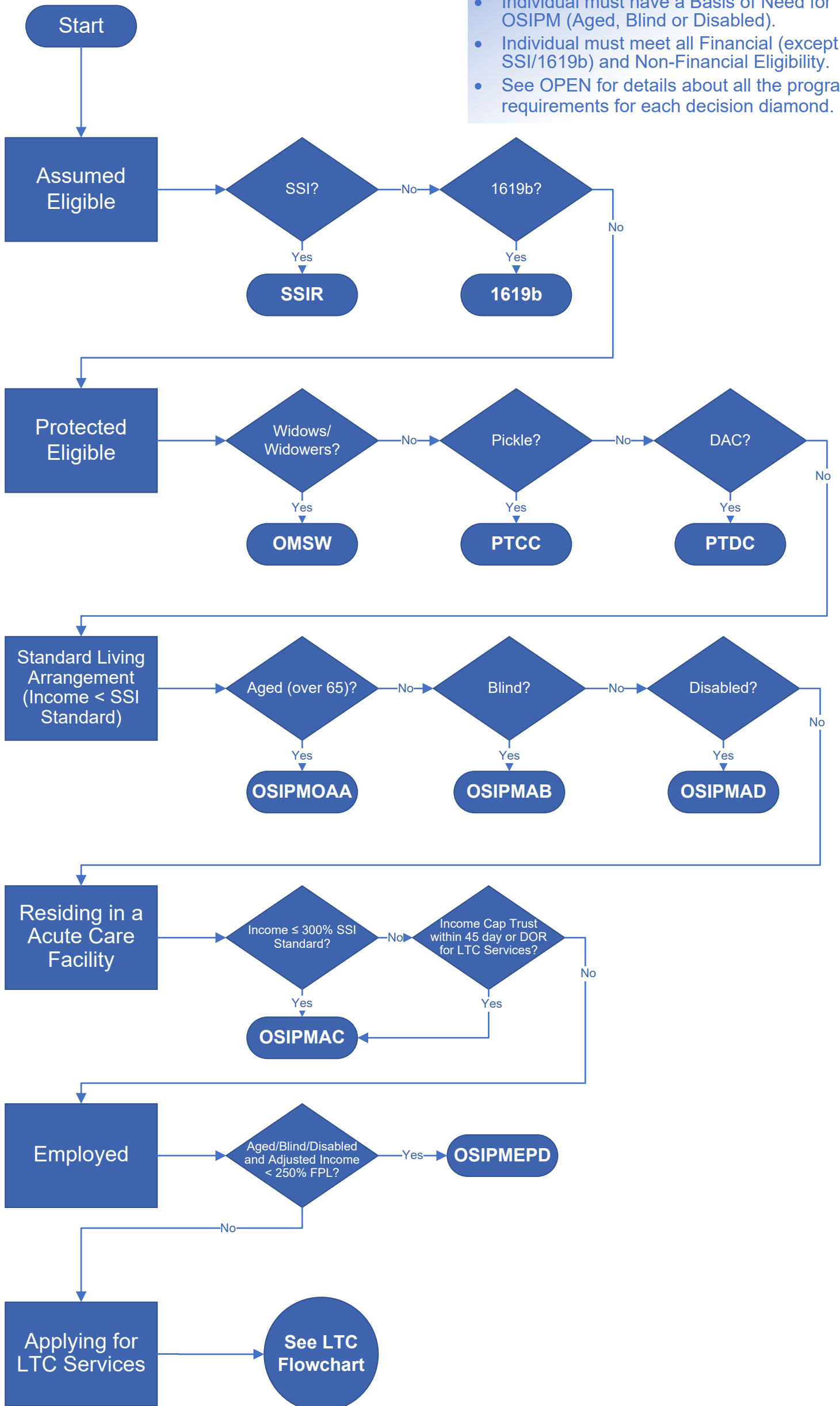


- Individual must meet all Financial and Non-Financial Eligibility
- Not all eligibility requirements are noted in this flowchart, see OPEN for details about all the program requirements and benefits.

Type of Assistance	ONE	MMIS Benefit Plan	MMIS Case Descriptor
QMB-BAS	QMPB	MED or BMM	QMB or QMM
QMB or QMB-SMB	SLMB	SMB	SMB
SMF or QMB-SMF	QSMF	SMF	SMF
State Buy-In			SBI
Client Buy-In			CBI

OSIPM (Non-Service) Medical Benefits Determined in ONE

- Individual must have a Basis of Need for OSIPM (Aged, Blind or Disabled).
- Individual must meet all Financial (except SSI/1619b) and Non-Financial Eligibility.
- See OPEN for details about all the program requirements for each decision diamond.



Long-Term Care Services in ONE

- Must meet all other LTC specific financial criteria. For example, resource limits, disqualifying Transfer of Assets, and Resource Assessments.
- Must meet all non-financial criteria.

